

# Pulse Secure Profiler

## Network visibility for BYOD, IoT and beyond

Give customers an easy-to-deploy solution that discovers, classifies and inventories what's on their network

### Pulse Profiler helps IT maintain control in today's rapidly changing networks



#### Automated Device Detection

Pulse Profiler dynamically identifies and classifies managed and unmanaged endpoint devices on the corporate network for maximum visibility and instant reporting.



#### Minimal Time to Service

Designed with users in mind, Pulse Profiler is easy to configure, install and deploy in the data center as a virtual or physical appliance.



#### Extensible Threat Response

Pulse Profiler works seamlessly with Pulse Policy Secure, our context-aware policy engine that controls enterprise access based on user, role, device, location, time, network, and application.



#### Superior Support Services

Backed by a world-class technical support and threat research team, Pulse Profiler helps IT teams avoid security surprises and mitigate the latest threats.

---

#### Starter bundles for network visibility and control

These bundles are designed to simplify the sales process for network visibility opportunities and are an ideal network access control (NAC) starter kit for small and mid-sized enterprises. Bundles include subscription-based Pulse Profiler software with a virtual or physical appliance. All options are provided in the Ordering Guide that follows.

---

#### Duration

Expires December 31, 2018

---

#### Who can participate?

All Pulse Secure Connect Now partner program registered partners.

---

#### What pricing should I use?

Bundles provide pre-authorized discounts. Contact your distributor for pricing requests.

---

#### How does it work?

1. Select Pulse Profiler software (small: 500 max devices, medium: 10,000 max devices)
2. Select a physical or virtual appliance (small: PSA3000, medium: PSA5000)
3. Select 3 year(s) Next Day SVC hardware support for physical appliances\*
4. Select 3 year(s) license Gold SVC software support for perpetual software\*
5. Request a bundle quote from your preferred distributor

\* Note: Support is included with virtual appliances and subscription software.

# Qualifying Questions

- **Do you know what's on your network?**

Pulse Profiler can help by automatically detecting and classifying managed and unmanaged devices on your network. Many IT organizations view endpoint visibility of these devices as table stakes for their NAC strategy, enabling them to report what is on their network and to reconcile inventory sources such as their configuration management database (CMDB).

- **How many devices do you think are on your network?**

Pulse Profiler can be flexibly deployed in small and medium networks discovering and tracking up to 10,000 devices per Profiler appliance.

- **Are you hosting applications in the cloud?**

When used with our VPN solution, Pulse Profiler can detect devices connected locally to your network or to cloud services such as Office 365, Box and Salesforce.

- **Are you worried about malware risk?**

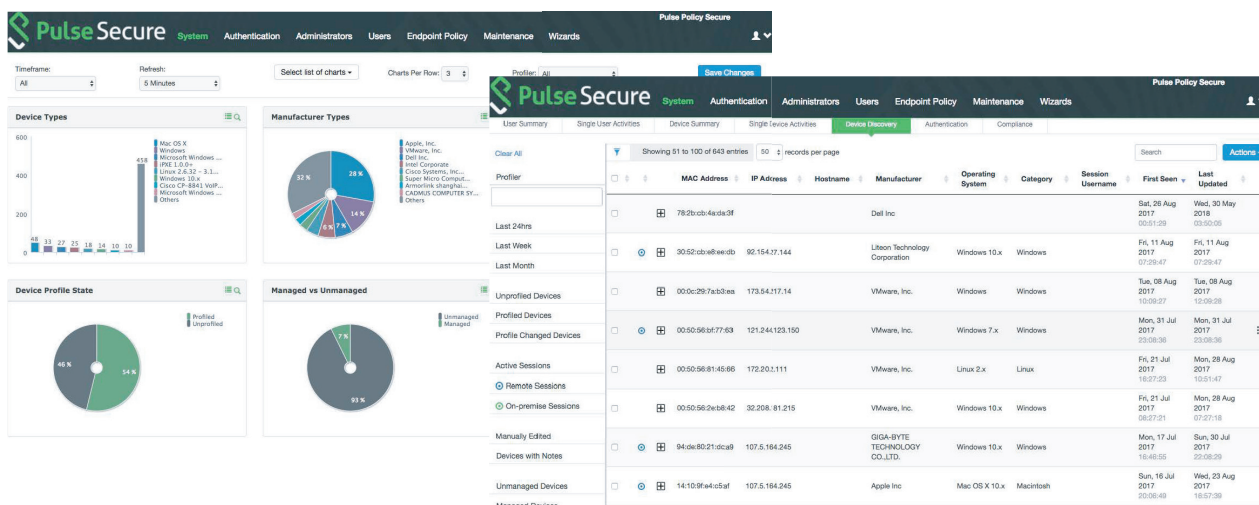
Wannacy and other malware were preventable simply by ensuring that devices were patched properly. Pulse Profiler helps you identify what devices on your network are at risk. Then, the admission policies of Pulse Policy Secure enable you to block vulnerable devices from accessing your network.

- **Do you have IoT devices on your network?**

Pulse Profiler helps you identify and inventory unmanaged endpoints such as VOIP phones and IP cameras. This visibility is important to mitigate vulnerabilities such as Devil's Ivy that put IoT devices at risk.

## Value Proposition: "What's on your network?"

Only 10% of organizations are fully aware of what's connected to their corporate network. Help your customers join the club that's in the know with Pulse Profiler. It's a simple and fast way to implement their NAC strategy. Start first with Pulse Profiler for visibility and then upgrade to the full NAC capabilities of Pulse Policy Secure when the networking environment and potential risks are fully understood.



### Automated Profiling

Pulse Profiler automatically discovers and classifies managed devices and unmanaged devices (e.g. printers, VOIP phones, IP cameras, etc.) that are connecting to the data center and cloud.



### Centralized Reporting

Pulse Profiler provides a convenient, centralized dashboard to monitor, report and track devices on the corporate network.



### Dynamic Tracking

Pulse Profiler continuously re-evaluates device profiles, based on DHCP and other fingerprinting methods, to detect and report endpoint profile changes such as MAC address modification.



### Easy Deployment

Pulse Profiler can be flexibly deployed as a virtual or physical appliance with subscription software. Profiler comes equipped with a full RADIUS server, can be deployed in an HA pair and is easily upgradable to full NAC capabilities.

# Ordering Guide

Use the tables below to find the right appliance and software bundle for your customer. They can deploy Pulse Profiler as a subscription-based solution, or as a physical appliance bundled with perpetual or subscription software. Note that all product and services subscriptions are three years in length and provided only as an SVC offer.

**Small Enterprise:** the PSA3000 is ideal for small networks up to 500 devices.

## PSA3000 Virtual Bundles

Subscription Software
PSA3000-V-3YR PS-PROFILER-RADIUS-MD-3YR
<b>NSP 390139</b>

## PSA3000 Hardware Bundles

Subscription Software	Perpetual Software
PSA3000 SVC-WAR-PSA3000-ND-3YR PS-PROFILER-RADIUS-SM-3YR	PSA3000 PS-PROFILER-RADIUS-SM SVC-WAR-PSA3000-ND-3YR SVC-PS-GLD-PRFL-RADIUS-SM-3YR
<b>NSP 390133</b>	<b>NSP 390130</b>

**Medium Enterprise:** the PSA5000 provides higher scale for mid-sized networks supporting up to 10,000 devices. Bundles are also available for those environments that require high availability.

## PSA5000 Virtual Bundles

Subscription Software
PSA5000-V-3YR PS-PROFILER-RADIUS-MD-3YR
<b>NSP 390137</b>

## PSA5000 Hardware Bundles

Subscription Software	Perpetual Software
PSA5000 SVC-WAR-PSA5000-ND-3YR PS-PROFILER-RADIUS-MD-3YR	PSA5000 PS-PROFILER-RADIUS-MD SVC-WAR-PSA5000-ND-3YR SVC-PS-GLD-PRFL-RADIUS-MD-3YR
<b>NSP 390132</b>	<b>NSP 390128</b>

High Availability Options
PSA5000-V-3YR PS-PROFILER-RADIUS-MD-HA-3YR
<b>NSP 390141</b>

High Availability Options	
PSA5000 SVC-WAR-PSA5000-ND-3YR PS-PROFILER-RADIUS-MD-HA-3YR	PSA5000 PS-PROFILER-RADIUS-MD-HA SVC-WAR-PSA5000-ND-3YR SVC-PS-GLD-PRFL-RADIUS-MD-HA-3YR
<b>NSP 390134</b>	<b>NSP 390131</b>

## Terms and Conditions

- Detailed terms and conditions are available from your distributor.
- All bundle elements must be placed on a single order.
- These bundles replace the deal registration and NSP process for these line items.
- End user company name, address and contact name must be provided on order.
- If all lines of the bundle are not completed – Pulse Secure reserves the right to claim back all discount on the incomplete deal.

For more information on the Pulse Profiler and Policy Secure, please go to <https://www.pulsesecure.net/policy-secure/overview/>



Americas: (844) 807-8573 info@pulsesecure.net  
 EMEA: +44 (0) 203 026 4485 infoemea@pulsesecure.net  
 Asia/Pacific: +65 6559 5324 info\_apac@pulsesecure.net